

DW-C60PLUS V2.1 Laptop Color Doppler Ultrasound Machine

Technical Specification



Based on Windows 7 platform, equipped with SSD (Solid State Disk), make the storage safer and more reliable, easy for switch machine.

Built-in 15600mAh Lithium battery, enable continuous scanning ≥ 3 hours, battery capacity: 173Wh.

- 1、 Monitor: 15 inch LED medicinal monitor
- 2、 Scanning mode: convex array/linear array/micro-convex array/phased array
- 3、 Probe interface: ≥ 1 , single interface, probe automatic identification.

Support: convex, linear, trans-vaginal, micro-convex, phased array, 4D volume, rectal probes etc.

4、 Language: Chinese/English (addable as per requirement)

5、 Display mode: B mode (B, B+B, 4B, B+M、M), C mode, PW mode, CW mode, real time 3D mode (4D) , B/C, B/C/PW, B/PW: 4 scanning speed adjustable

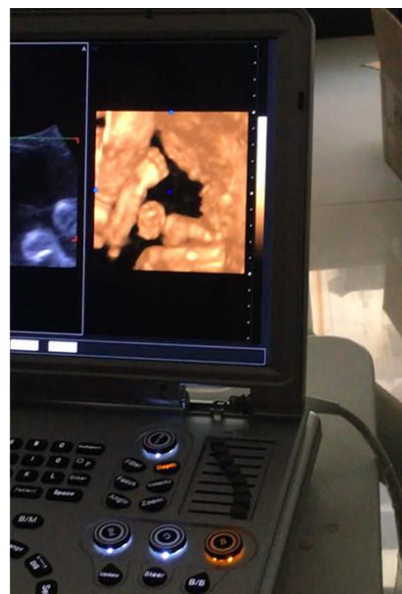
6、 Electronic focus: 4

7、 Body mark: ≥ 57

CW function on cardiac



Real time 4D on fetal



Images on other applications



- 8、 Frequency: 2.0-12.0MHz multi-frequency (2.0MHz, 3.0MHz, 3.5MHz, 4.0MHz, 5.5MHz, 5.0MHz, 6.5MHz, 9.0MHz, 6.0MHz, 7.5MHz, 12.0MHz as per probe)
Convex probe frequency range: 2.0, 3.0, 3.5, 4.0, 5.5MHz
Trans-vaginal probe frequency range: 5.0, 6.0, 6.5, 7.5, 9.0MHz
Phased array probe frequency range: 2.0, 3.0, 3.5, 4.0, 5.0MHz
Linear probe frequency range: 6.0, 6.5, 7.5, 10.0, 12.0MHz
Micro-convex probe R20 frequency range: 5.0, 6.0, 6.5, 7.5, 9.0MHz
Micro-convex probe R11 frequency range: 2.0, 3.0, 3.5, 4.0, 5.5, 6.5, 7.5, 10.0MHz
4D volume probe frequency: 2.0, 3.0, 3.5, 4.0, 5.5, 6.5MHz
- 9、 Image processing: up/down、 left/right、 angle、 blood flow reversal
- 10、 Magnification: 2-10 times magnification
- 11、 Automatic freeze function: effective protection of probe life without any operation
- 12、 Alternative image storage method: UI storage and image storage only
- 13、 Cine loop speed, visible and adjustable
- 14、 Measurement: distance, circumference, area, volume, heart rate, tube diameter, narrow rate, angle, speed, abdomen, cardiac, general, musculoskeletal, early obstetric, middle and late obstetric, pelvic(uterus accessory), small organ, urology, peripheral, gestational week and EDD, fetal weight, etc, formula can be converted to edit in obstetric measurement. The distance, circumference and volume measurement of 3D mode.
- 15、 Note: date, clock, name, gender, age, doctor, hospital, note (full screen character editing)
- 16、 **Cine loop \geq 1200 frames, can be viewed continuously or by frame**
- 17、 Storage: in the storage display interface can be sent to directly to the mobile device, image storage path (can be stored directly to the U disk and other external storage devices), probe parameter storage, cine loop storage, measurement results storage, report storage.
- 18、 Gray Scale: 256
- 19、 With puncture guide function, puncture line position can be adjusted
- 20、 With gravel positioning, dynamic target tracking function.
- 21、 Dynamic range: 0-270dB
- 22、 Intelligent TGC: 8 segments
- 23、 Pre-processing: variable aperture, dynamic apodization, dynamic digital filtering, multi-beam parallel processing technology, THI etc.
- 24、 Post-processing:
Dynamic range 0-270dB,
black and white afterglow 0-7
Smoothing 0-7
Gray curve 1-16
Frame correlation
SHG (Second Harmonic Generation)
Sound power
Wall filter

Cumulative number, baseline adjustment, sampling frame adjustment, spectrum sampling volume, spectral sampling volume angle, PRF, etc.

25、 Blind zone: ≤ 4

26、 Max scanning depth: 320mm;

27、 Geometric accuracy: horizontal $\leq 5\%$, vertical $\leq 5\%$

28、 Resolution: lateral $\leq 2\text{mm}$, axial $\leq 1\text{mm}$

29、 External interface: VIDEO, USB port *4, DICOM 3.0

30、 Magnification: 16 kinds; disease diagnosis more accurate

31、 **Frame rate: 5-1016fps (adjustable as per requirement)**

32、 Scanning range: 5%--100%

33、 Gain control: Total gain 0~127dB, PW gain 0-15, CFM gain: 0-15

34、 Image optimization: 6 level adjustable

35、 Smoothing: 8 level adjustable

36、 Edge enhancement: 8 level adjustable

37、 PRF: 16 level adjustable (1.82-29.43KHz)

38、 Gray level curve: 16 level adjustable

39、 Sound power: 15 level adjustable

40、 Net weight: 6.3kg; Gross weight: 18kg;

41、 Machine size: 375x350x80mm (LxWxH);

42、 Packing size:

46*32.5*54cm (two-layer aluminum plastic pull-rod box, omni-directional wheel)

61*31*50cm (standard export carton box with foam)



